



UNITED ARAB EMIRATES
MINISTRY OF EDUCATION

What is The Internet?

Cycle 1 – Grade 2



Computing, Creative Design and Innovation

Student book
Grade 2

Volume 3

MOE Copyright

1445- 1446 A.H. /2024- 2025 A.D.



Unit 2

Digital World

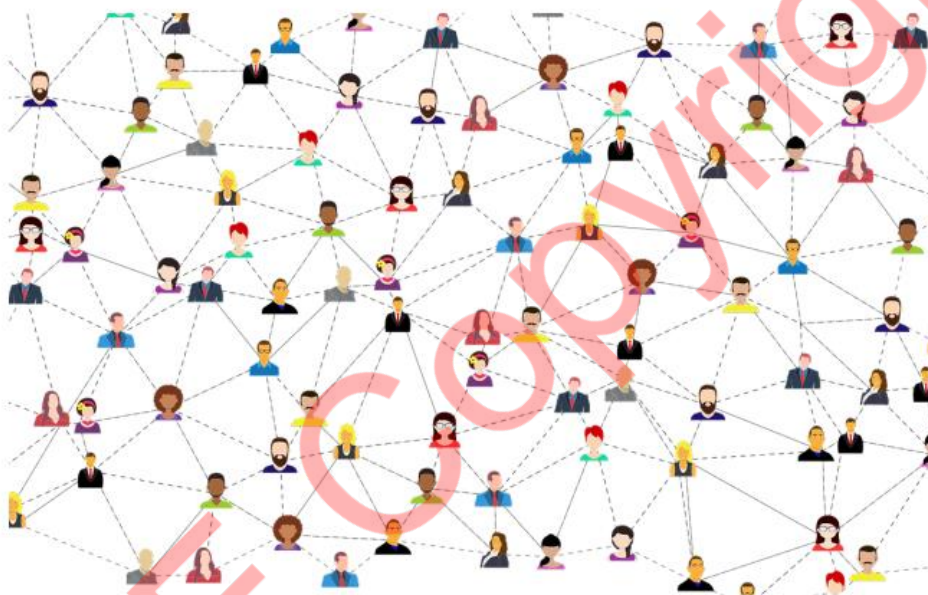


23

The Internet

What is the Internet?

The Internet connects people around the world.



It is lots of **computers** connected to each other. Watch this video to learn more:



Activity 1



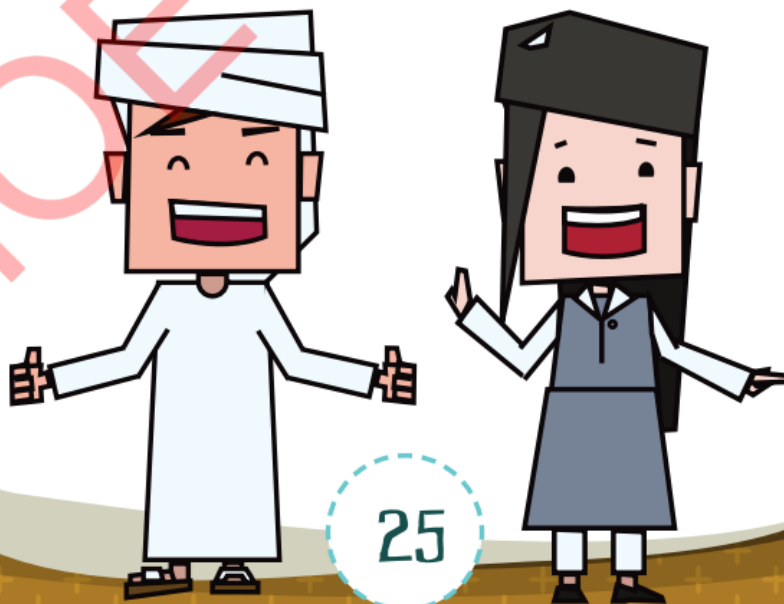


Note!

The internet is a network.



*A network means **many** connected things.*



Uses and impact

The Internet is used everywhere!

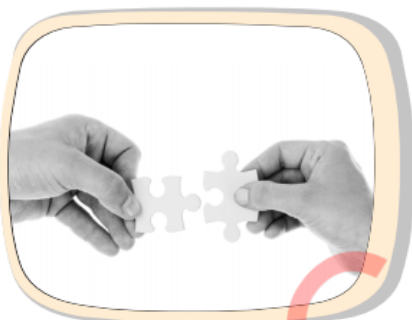


Activity 2

Theory



The Internet helps us do many things. For example:



Connect with people



Buy things



Study



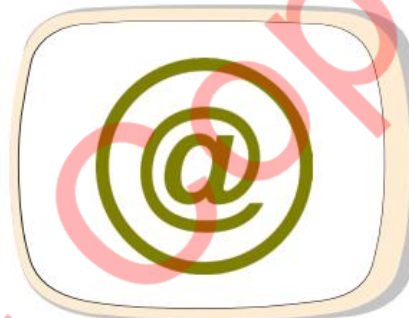
Think of your school. You use:



Online lessons



LMS



Email

The Internet makes our lives easier.
For example, we can attend online
lessons.



27





But it also has negative effects.



Bullying



Identity theft



Addiction



Fake news



28



Rules

Follow these rules. They will help you avoid the negative effects of the Internet.

Do:



Create a password



Log out after use



Tell your parents if something is wrong



Be nice to others

Do Not:



Share your
password



Talk to
strangers



Share **personal**
information



Accept unknown
downloads



Activity 3



Activity 4



30

All rights reserved. No part of this book may be reproduced, stored in a retrieval system or transmitted in any form or by any means without prior permission from the publisher.

Passwords

Passwords keep your devices and accounts safe.



Remember!

Passwords are codes. You can use them to protect:



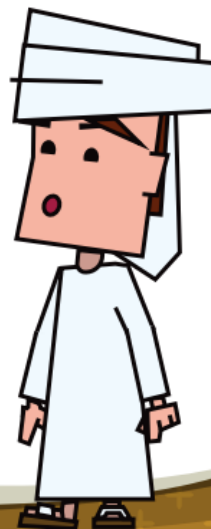
Computers



Online Accounts



31



When creating a password, use:



at least 8 characters



numbers



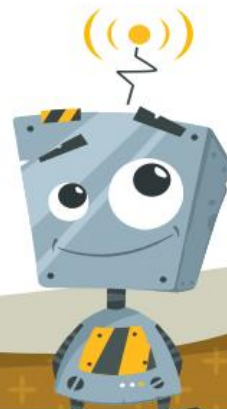
symbols



upper and lowercase



32



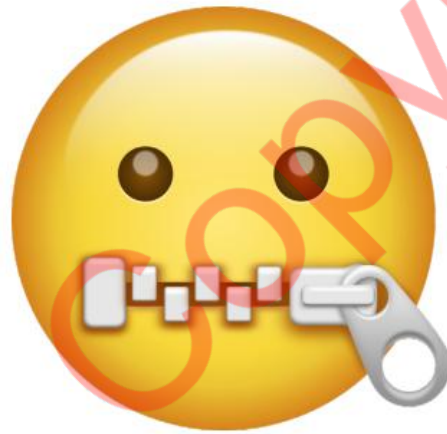


Do not use words that can be guessed easily, such as your name.



Note!

Do not tell your **password** to anyone other **than** your parents.



Activity 5



33





Computing, Creative Design and Innovation

Activity book

Grade 2

Volume 3

MOE Copyright

1445- 1446 A.H. /2024- 2025 A.D.



The Internet

What is the Internet?



Activity 1



Which of these apps work with the internet? Discuss with your teacher. Then, tick the correct answers.

Skype

☐

Whatsapp

☐

Phone

☐

Email

☐

Student
feedback



Uses and impact



Activity 2

Theory

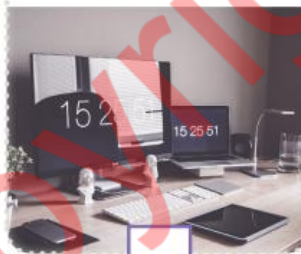


How do you use the Internet? Choose the options that apply.

School

☐

Videos

☐

Fun

☐

Talking to friends

☐

Think about how your life would be different without the Internet.

Say one line to your class about this.

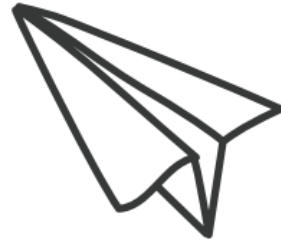
Student
feedback



Rules



Activity 3



How do you connect with people online?

Teams

☐

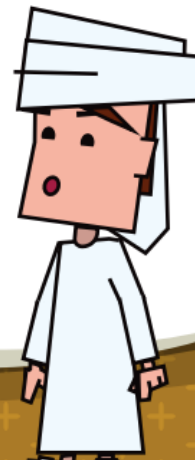
Email

☐

Other

☐

If you chose other, describe it here.





Place ☒ on the right option.

If you see something nasty:

Tell your parents

☐

Do not tell your parents

☐

If someone asks you to turn on your camera:

Tell your parents

☐

Do not tell your parents

☐

If someone says you have won a million dirhams and asks for your address:

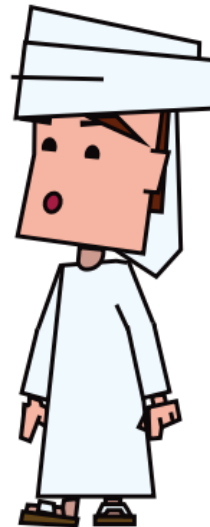
Tell your parents



Do not tell your parents



Student
feedback



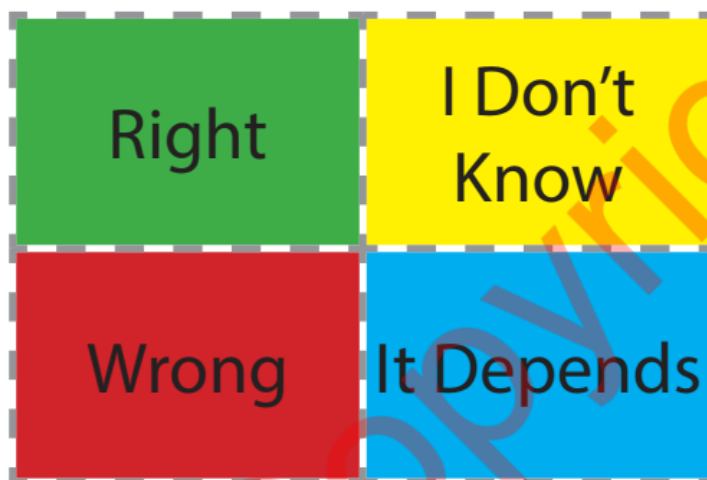


Activity 4

Theory



Cut the cards. (You can find the cards at the end of the book).



Hold the card up you think is correct when the teacher says these statements. Explain your choice.

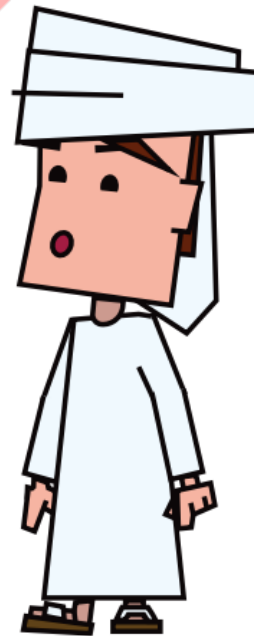
- Sending nasty texts about classmates.
- Putting pictures of your friends online.
- Logging off after you finish.
- Visiting unknown websites without telling your parents.
- Sharing your pictures with strangers.



Note!

Ask your teacher or parents to help you cut the cards.

Student
feedback



Passwords



Activity 5

Theory



In this activity, you will create a password.

An example of a good password is:

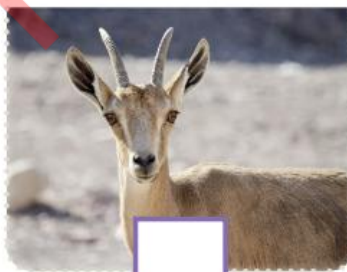
dB4!u43M!r4t35

Think of a memorable word. You may choose your word from one of these categories:

City



Animal



Cartoon



My own choice





Use the rules you learned before to make a password using this word.

Go through this checklist. Does your **password** tick each box?

- ☐ My **password** is more than 8 characters long.
- ☐ My **password** includes a capital letter.
- ☐ My **password** includes a symbol.
- ☐ My **password** includes a number.
- ☐ My **password** cannot be guessed easily.
- ☐ No one knows my **password**.

Student
feedback



